



Tel: +6019 280 2788 (Victor Lim)

Email: victorlimcbd@gmail.com

Brunsfeld Oasis Tower

DETAILS

Location: **Ara Damansara**

Rental Rate (Min) **RM 4.50 per sq. ft.** Typical Floor Area (Min) **6,800 sq. ft.**

DESCRIPTION

- Freehold mixed development with a ready catchment population of 60,000
 - Close to Subang Skypark Terminal, Sime Darby Medical Centre and Auto City
 - Easily accessible from major highways such as NKVE, LDP, KESAS, ELITE
 - LRT Station provides seamless connection to KL City Centre and other parts of Klang Valley
 - A short distance from the Japanese International School, Citta Mall & retail shops
 - Minutes away from renowned golf and country clubs such as Saujana, Glenmarie, and Tropicana.
-

GOOGLE MAP

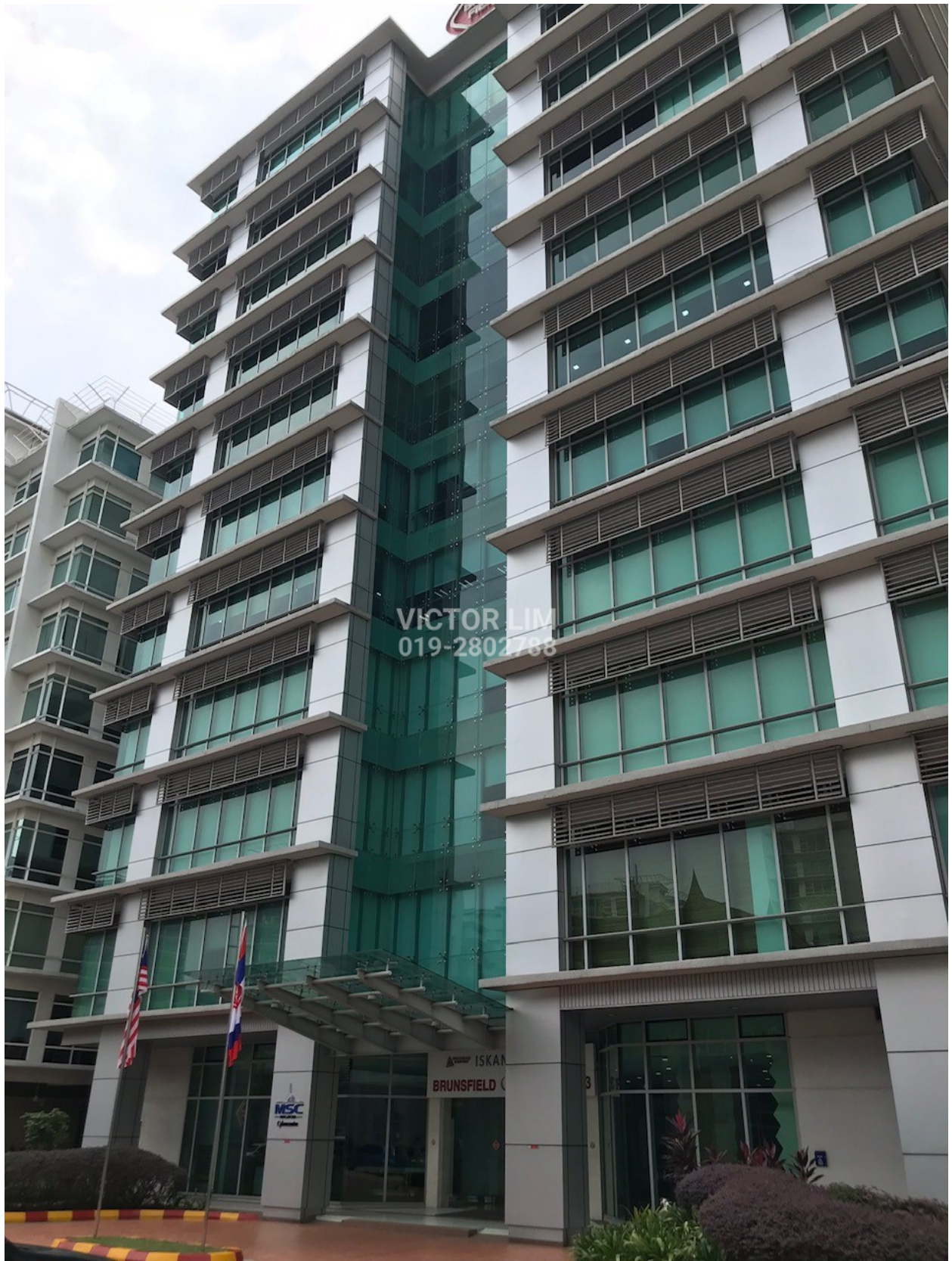
Click [HERE](#) to link to google map

GALLERY









VICTOR LIM
019-2802788

ISKAN
BRUNSFIELD

MSC

3

